

MARINE ENGINE

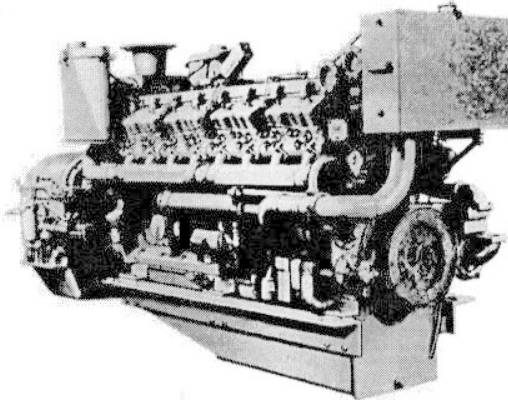
CATERPILLAR

D399

1000 hp @ 1225 rpm, 1380 hp @ 1300 rpm

MARINE PROPULSION

Turbocharged-Aftercooled



V16, 4-STROKE-CYCLE DIESEL

MARINE TRANSMISSION	CAT 7251	CAT 7261	CAT 7271
REDUCTION RATIOS	1.00:1	2.89:1	4.50:1
		3.18:1	5.09:1
		3.49:1	5.55:1
		3.84:1	7.00:1
		4.22:1	

BORE—in (mm)	6.25 (159)
STROKE—in (mm)	8.00 (203)
DISPLACEMENT—cu in (liter)	3,927 (64.4)
ROTATION (from flywheel end)	Clockwise or Counterclockwise
ENGINE WEIGHT, Net Dry (approximate)—lb (kg)	
Separate Circuit Aftercooled (SCAC) (for keel cooling)	17,240 (7818)
Separate Circuit Aftercooled (SCAC) (for heat exchanger cooling)	17,250 (7823)
Jacket Water Aftercooled (JWAC)	17,150 (7778)
TRANSMISSION WEIGHT, Net Dry (approximate)—lb (kg)	
7251	5,290 (2399)
7261 (weight varies with gear ratio)	6,340-6,635 (2875-3009)
7271	8,000 (3628)

Note: Caterpillar Marine Engine and Transmissions are approved for certification by the following marine classification societies: ABS, BV, CBSI, DnV, GL, LR, NK, R.I.Na.

STANDARD EQUIPMENT

Air Intake System:
Air Cleaner Adapters
Air Cleaner Service Indicators
Single-Stage Dry Air Cleaners
Control Systems:
Hydra-Mechanical Governor
Cooling System:
Coolant Expansion Tank
Coolant Pump
Coolant Thermostats
Lube Oil Cooler
Non-Self-Priming Fresh Water Pump (SCAC—KC)
Self-Priming Sea Water Pump (SCAC—H/E)
Exhaust System:
Watercooled Exhaust Manifolds (continuous rating only)
Watercooled Turbocharger Shield
Fuel System:
Fuel Filter
Fuel Priming Pump
Fuel Transfer Pump
Instruments and Gauges:
Instrument Panel with Ten Gauges
SAE Standard Dual Tachometer Drive Service Meter
Lubricating System:
Emergency Connections
Lube Oil Filter
Lube Oil Pump

Manual Sump Pump
Prelube Pump
Mounting System:
Lifting Eyes
Mounting Rails
Power Takeoffs:
Flywheel Housing, SAE No. 00
Front Accessory Drive
Protection Devices:
Manual Shutoff Control
Shutoffs—Oil Pressure and Coolant Temperature Contactors, Intake Manifold Temperature Contactor (SCAC), Overspeed and Engine Reversal Protection (1200-1300 rpm)

ACCESSORY EQUIPMENT*

Control Systems:
Engine Mounted Pilot House
Woodward UG8 Governor
Cooling System:
Emergency Coolant Connections
Heat Exchangers
Exhaust System:
Muffler
Fuel System:
Double Wall Fuel Lines
Duplex Fuel Filter
Flexible Fuel Lines

Instruments and Gauges:
Exhaust Pyrometer and Thermocouples
Pilot House Panels
Tachometer
Lubricating System:
Duplex Lube Oil Filters
Marine Transmissions:
Cat 7271, 7261, 7251
Emergency Lube Oil Connections (7261)
Trolling Valve (7271, 7261)
Mounting System:
Sound Isolation Mounting (engine and 7261)
Power Takeoffs:
Auxiliary Drive Pulleys
Front Enclosed Clutch
Protection Devices:
Overspeed Shutoff
Rack Solenoid Shutoffs (24, 30-32V)
Spare Parts:
ABS, BV, DnV, GL, LR, NK, R.I.Na
Approved Parts Kits (engine and 7271, 7261)
Starting Systems:
Air Starting
Battery Chargers
Battery Sets
Charging Alternators (24, 30-32V)
Electric Starting (24, 30-32V)
Glow Plugs

*Consult your Caterpillar Dealer for additional accessory equipment.